

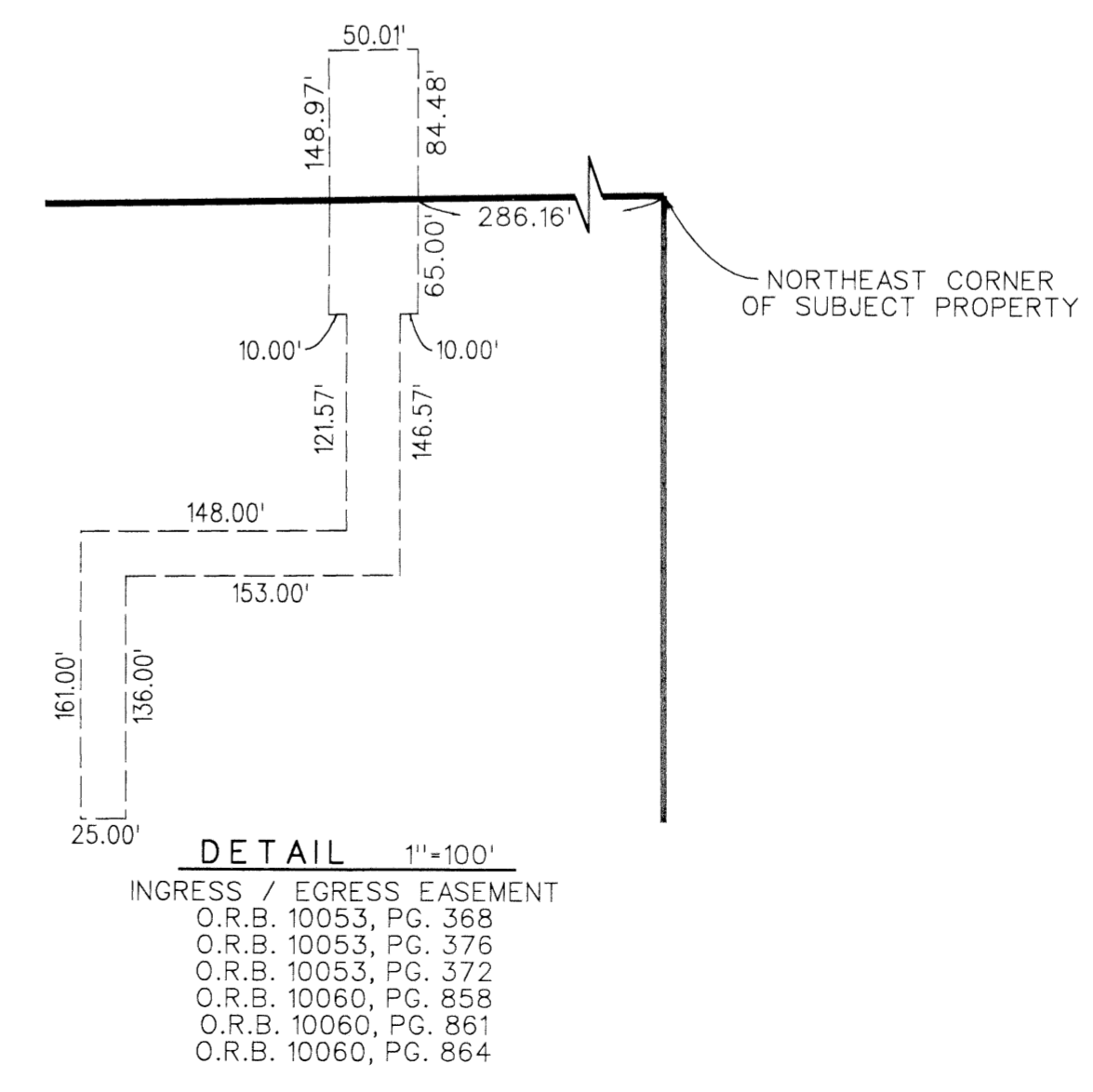
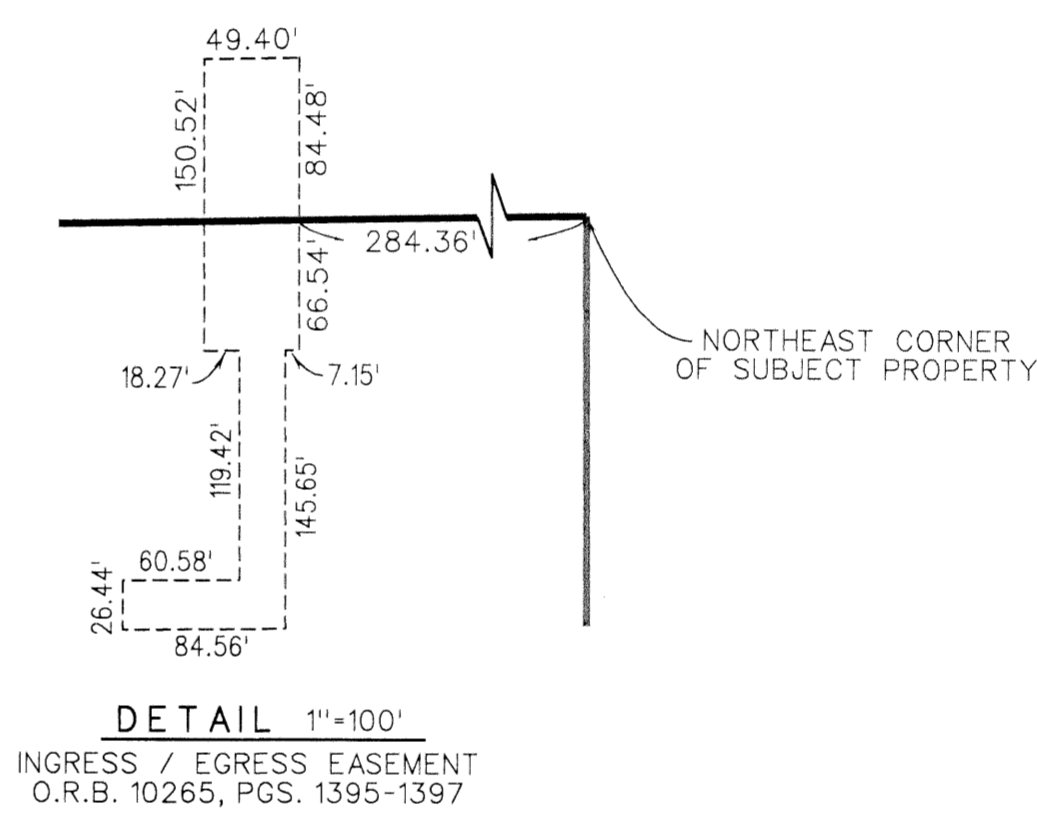
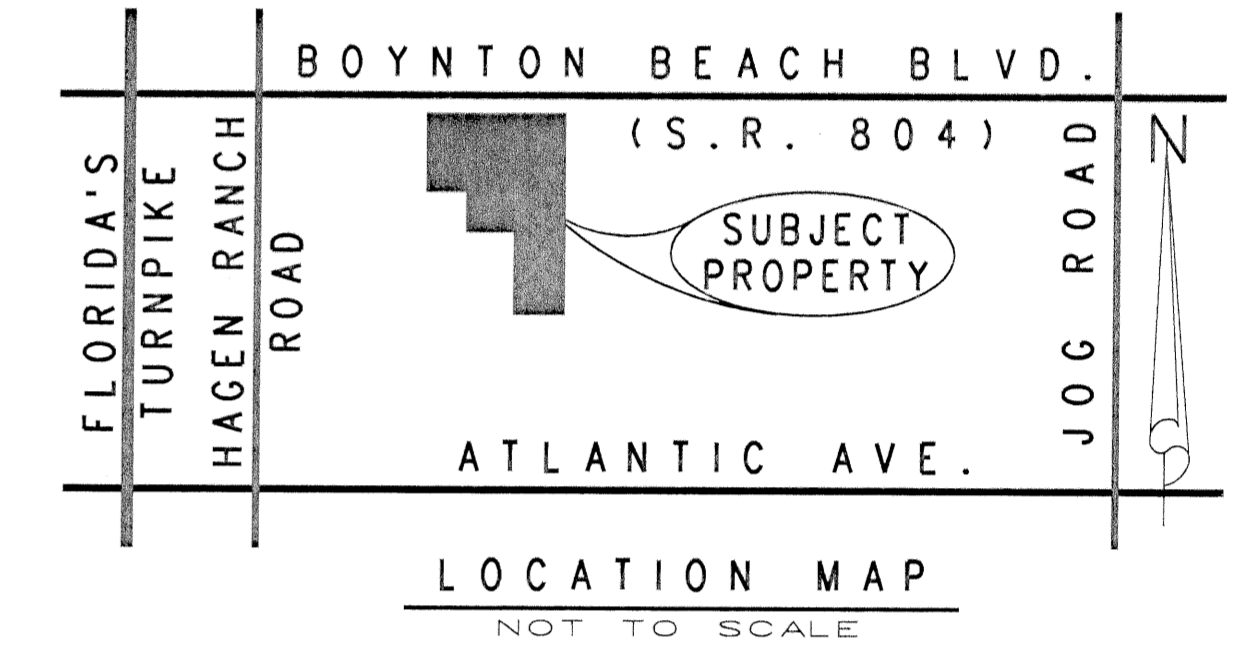
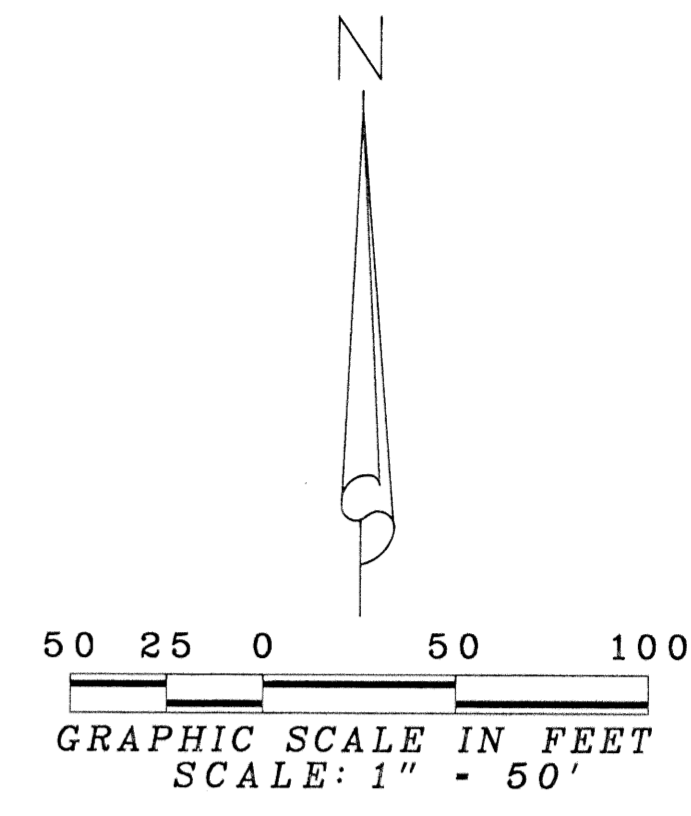
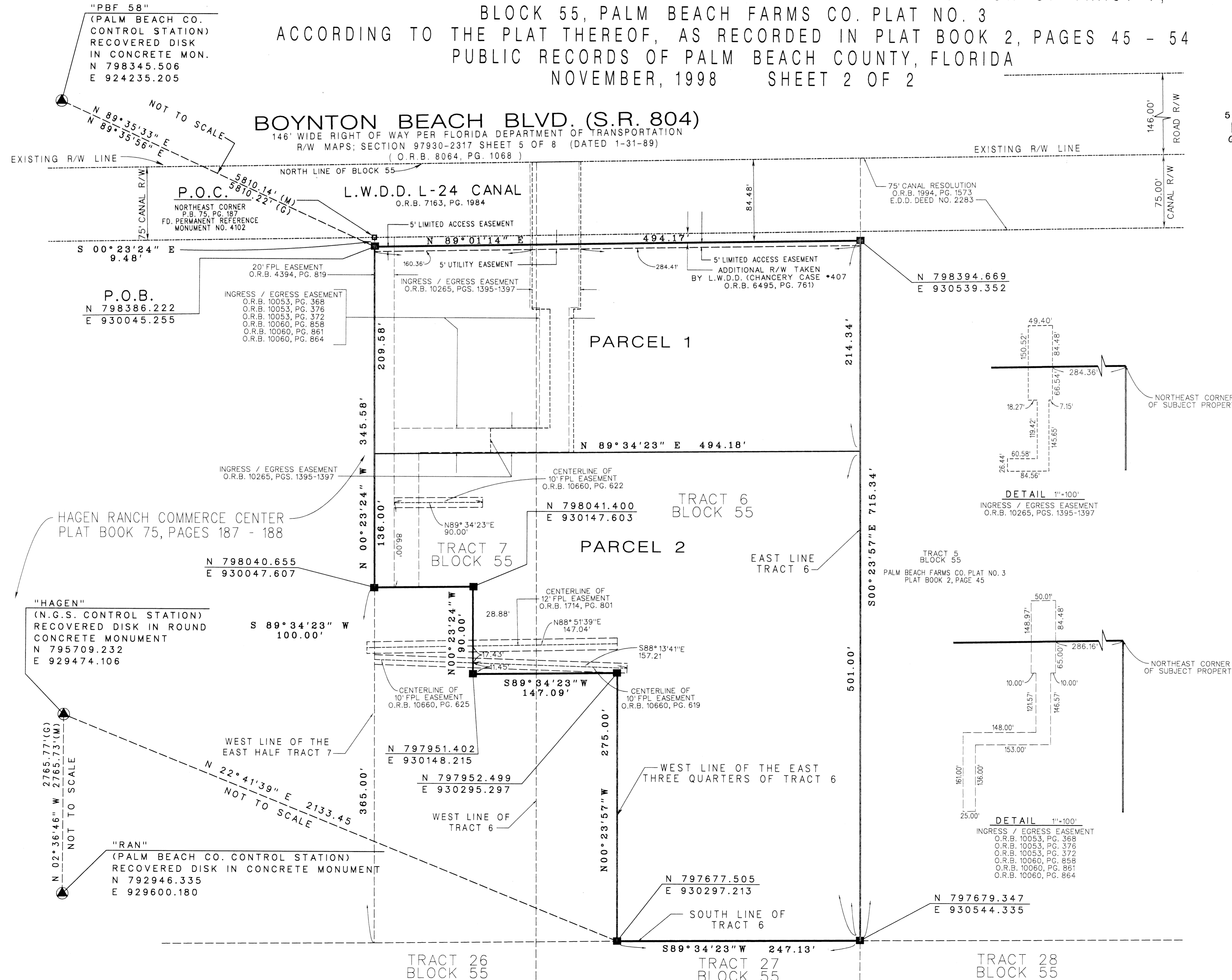
BOYNTON BEACH BOULEVARD SELF STORAGE

5000-293

108

LYING IN SECTION 28, TOWNSHIP 45 SOUTH, RANGE 42 EAST
PALM BEACH COUNTY, FLORIDA

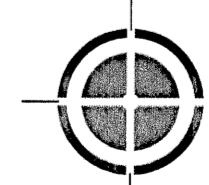
AND BEING A REPLAT OF A PORTION OF TRACT 6 AND A PORTION OF TRACT 7,
BLOCK 55, PALM BEACH FARMS CO. PLAT NO. 3
ACCORDING TO THE PLAT THEREOF, AS RECORDED IN PLAT BOOK 2, PAGES 45 - 54
PUBLIC RECORDS OF PALM BEACH COUNTY, FLORIDA
NOVEMBER, 1998 SHEET 2 OF 2



ABBREVIATIONS

- P.B. - PLAT BOOK
- R/W - RIGHT-OF-WAY
- FD. - FOUND
- O.R.B. - OFFICIAL RECORD BOOK
- PG. - PAGE
- FPL - FLORIDA POWER AND LIGHT CO.
- ESM'T - EASEMENT
- P.O.C. - POINT OF COMMENCEMENT
- P.O.B. - POINT OF BEGINNING
- (G) - GRID
- (M) - MEASURED

SUBDIVISION: Boynton Beach Blvd Self Storage
 BOOK: 04
 PAGE: 108
 FLOOD MAP # 185A
 ZONING: MUPD
 COUNTY: 50
 SE: 40-11
 TAX: 495
 PLOT NAME: Boynton Beach Blvd Self Storage



LIDBERG LAND SURVEYING INC.
LB4431

675 West Indiantown Road, Suite 200,
Jupiter, Florida 33458 TEL. 561-746-8454

FLD.	J.P.	JOB 98-003	FB.	PG.
OFF.	E.C.	DATE FEB. 1998	DWG.	D98-003
CKD.	D.L.	REF: 98003D1+1ms	SHEET	2 OF 2